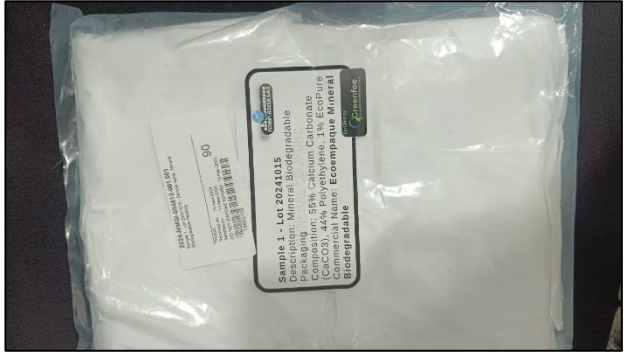


<b>Report No.:</b> MUM/004812/2024	<b>Sample No:</b> 18683155	<b>Report Date:</b> 22/01/2025
------------------------------------	----------------------------	--------------------------------

<b>Sample Registration Date</b>	14/11/2024
<b>Analysis Starting Date</b>	14/11/2024
<b>Analysis Completed on</b>	22/01/2025
<b>Sampling Done by</b>	Sample drawn and supplied by customer
<b>Deviation from the test methods:</b>	None
<b>Packaging Condition/sealed/unsealed</b>	Sealed with box
<b>Sample Image</b>	 <p><b>Figure 1: Test Sample</b></p>

**DETAILS PROVIDED BY THE CUSTOMER**

<b>Customer Name:</b>	COMPLASESA SAS
<b>Contact Person:</b>	Mr. David Enriquez Ordonez
<b>Address:</b>	KM 25 Via Siberia Funza VD Cacique LA Playa BG 7
<b>Sample submitted as</b>	Sample 1: Lot 20241015
<b>Description on label/Sample Bottle</b>	Mineral Biodegradable Packaging
<b>Sample type</b>	55% Calcium Carbonate (CaCO <sub>3</sub> ), 44% Polyethylene, 1% EcoPure
<b>Quantity</b>	1 Packet
<b>Mode of Packaging</b>	Courier Box
<b>Sample condition</b>	Sample was at ambient temperature in good condition
<b>Test Method</b>	ASTM D5511 Standard Test Method for Determining Anaerobic Biodegradation of Plastic Materials Under High-Solids Anaerobic-Digestion Conditions

Note : The results reported relate to the sample tested only. Latest version of designated test methods has been used wherever it requires. The Test Certificate shall not be reproduced in full or part without the written permission of INTERTEK. The sample(s) has not been drawn/sampled by INTERTEK LAB. The reported result(s) provide no warranty or verification on the sample(s) representing any specific goods and / or shipment and only relate to the sample(s) as received and tested. This report was prepared solely for the use of the client named in this report. Intertek disclaims any and all liability for damage or injury which results in the use of the information contained herein and accepts no responsibility for any loss, damage or liability suffered by a third party as a result of any reliance upon or use of this report. All jobs are performed as per Intertek terms & Conditions available at <http://www.intertek.com/terms> or can be made available on request

<b>Report No.:</b> MUM/004812/2024	<b>Sample No:</b> 18683155	<b>Report Date:</b> 22/01/2025
------------------------------------	----------------------------	--------------------------------

### **LABORATORY**

Testing as presented in this report was conducted by Environmental division of Intertek India Private Limited. The testing facility is located at F wing, 2<sup>nd</sup> Floor, Chandivali Saki vihar Road, Andheri (East), Mumbai – 400 072, India.

### **SAMPLE RECEIPT**

The Mineral Biodegradable Packaging samples were received on 14/11/2024 at the Intertek testing facility. The sample was sent through courier. The sample was at ambient temperature in good condition with no evidence of damage or contamination. No temperature preservation was required.

### **PROJECT DESCRIPTION**

Mineral Biodegradable Packaging Sample was submitted by COMPLASESA SAS for testing under standard ASTM D5511. This test method covers the determination of the degree and rate of anaerobic biodegradation of plastic materials in high-solids anaerobic conditions. The test materials are exposed to a methanogenic inoculum derived from anaerobic digesters operating only on pretreated household waste. The anaerobic decomposition takes place under high-solids (more than 30 % total solids) and static non-mixed conditions. This test method is designed to yield a percentage of conversion of carbon in the sample to carbon in the gaseous form under conditions found in high-solids anaerobic digesters, treating municipal solid waste.

### **INOCULUM COLLECTION AND CONDITIONING**

The anaerobic digested sewage sludge (Figure 2) mixed with household waste was obtained from the Chembur (Mumbai). To make the sludge adapted and stabilized during a short post-fermentation at 53°C, the sludge was pre-incubated (one week) at 53°C. This means that the concentrated inoculum was not fed but allowed to post ferment the remains of previously added organics allowing large easily biodegradable particles were degraded during this period and reduce the background level of biogas from the inoculums itself.

Note : The results reported relate to the sample tested only. Latest version of designated test methods has been used wherever it requires. The Test Certificate shall not be reproduced in full or part without the written permission of INTERTEK. The sample(s) has not been drawn/sampled by INTERTEK LAB. The reported result(s) provide no warranty or verification on the sample(s) representing any specific goods and / or shipment and only relate to the sample(s) as received and tested. This report was prepared solely for the use of the client named in this report. Intertek disclaims any and all liability for damage or injury which results in the use of the information contained herein and accepts no responsibility for any loss, damage or liability suffered by a third party as a result of any reliance upon or use of this report. All jobs are performed as per Intertek terms & Conditions available at <http://www.intertek.com/terms> or can be made available on request

<b>Report No.:</b> MUM/004812/2024	<b>Sample No:</b> 18683155	<b>Report Date:</b> 22/01/2025
------------------------------------	----------------------------	--------------------------------



**Figure 2: Anaerobic microbial inoculum**

### **INOCULUM PROPERTIES**

A sample of the anaerobic digested sewage sludge was analyzed for pH, percent dry solids, and volatile solids, as well as, the amount of CO<sub>2</sub> and CH<sub>4</sub> evolution during the testing. Table 1 lists the results of this initial testing.

### **METHODOLOGY:**

**Inoculum Medium:** Remove enough inoculum (approximately 15 kg) from the post-fermentation vessel and mix carefully and consistently by hand in order to obtain a homogeneous medium. Test three replicates each of a blank (inoculum only), Positive control (Reference material) (thin-layer chromatography cellulose), negative control (optional), and the test substance being evaluated.

Manually mix 1000 g wet weight (at least 20 % dry solids) of inoculum in a small container for a period of 2 to 3 min with 15 to 100 g of volatile solids of the test substance or the controls for each replicate. For the three blanks containing inoculum only, manually mix 1000 g of the same inoculum in a small container for a period of 2 to 3 min with the same intensity as was done for the other vessels containing test substance or controls. Determine the weight of the inoculum and test substance added to each individual Erlenmeyer flask accurately. Add the mixtures to a 2-L wide-mouth Erlenmeyer flask and gently spread and compact the material evenly in the flask to a uniform density.

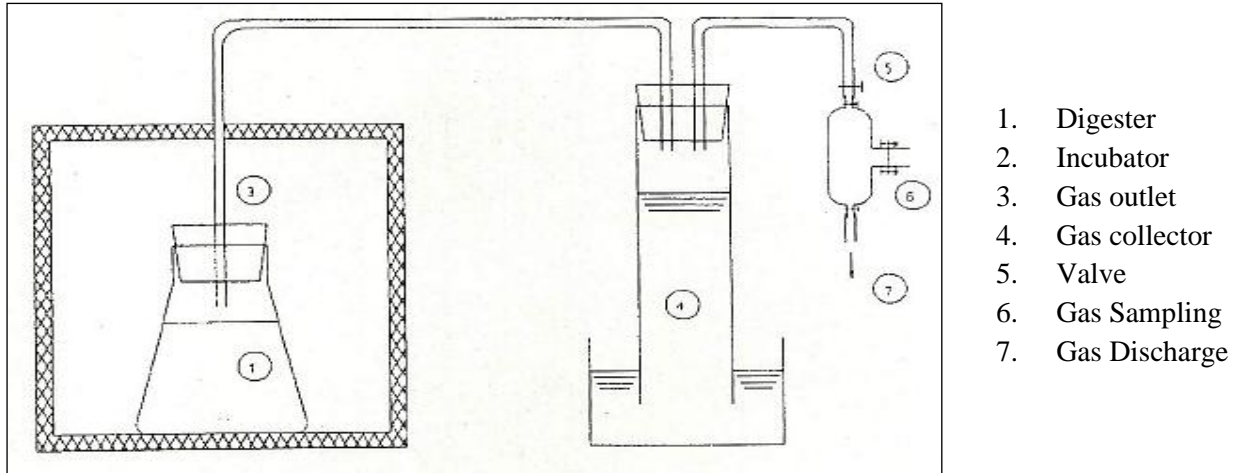
After placing the Erlenmeyer flask in incubator, connect it with the gas collection device. Incubate the Erlenmeyer flasks in the dark or in diffused light at 52°C (± 2°C) for thermophilic conditions, The incubation time shall be run until no net gas production is noted for at least five days from both the Positive control (Reference material) and test substance reactors. Control the pH of the water used to measure biogas production to less than two by adding HCl.

**Note :** The results reported relate to the sample tested only. Latest version of designated test methods has been used wherever it requires. The Test Certificate shall not be reproduced in full or part without the written permission of INTERTEK. The sample(s) has not been drawn/sampled by INTERTEK LAB. The reported result(s) provide no warranty or verification on the sample(s) representing any specific goods and / or shipment and only relate to the sample(s) as received and tested. This report was prepared solely for the use of the client named in this report. Intertek disclaims any and all liability for damage or injury which results in the use of the information contained herein and accepts no responsibility for any loss, damage or liability suffered by a third party as a result of any reliance upon or use of this report. All jobs are performed as per Intertek terms & Conditions available at <http://www.intertek.com/terms> or can be made available on request

<b>Report No.:</b> MUM/004812/2024	<b>Sample No.:</b> 18683155	<b>Report Date:</b> 22/01/2025
------------------------------------	-----------------------------	--------------------------------

**ANAEROBIC DIGESTER SETUP FOR THE PLASTIC BIODEGRADATION**

The biodegradation testing of sample was performed in the digester as shown in the (Figure-3).



**RESULT:**

The most important biochemical characteristics of the inoculum such as pH, Volatile Fatty Acids,  $\text{NH}_4^{++}\text{N}$ — and dry solids were studied.

**Table 1: Results of Initial testing of the anaerobic digested sewage sludge**

Parameters	Requirement	Actual results
pH	7.5 to 8.5	7.85
Kjeldahl nitrogen	0.5 to 2 g/kg wet weight	1.26
Dry Solids at 105 °C	>20%	45.99
Volatile Solids at 550 °C	Below 1 g/kg wet weight	0.71

Note : The results reported relate to the sample tested only. Latest version of designated test methods has been used wherever it requires. The Test Certificate shall not be reproduced in full or part without the written permission of INTERTEK. The sample(s) has not been drawn/sampled by INTERTEK LAB. The reported result(s) provide no warranty or verification on the sample(s) representing any specific goods and / or shipment and only relate to the sample(s) as received and tested. This report was prepared solely for the use of the client named in this report. Intertek disclaims any and all liability for damage or injury which results in the use of the information contained herein and accepts no responsibility for any loss, damage or liability suffered by a third party as a result of any reliance upon or use of this report. All jobs are performed as per Intertek terms & Conditions available at <http://www.intertek.com/terms> or can be made available on request

<b>Report No.:</b> MUM/004812/2024	<b>Sample No:</b> 18683155	<b>Report Date:</b> 22/01/2025
------------------------------------	----------------------------	--------------------------------

The biogas volume in the gas sampling bag was measured (Table- 2). Presence of gas in the gas collector of Positive control (Reference material) indicated that the inoculum was viable and gas displacement was observed both in Positive control (Reference material) and Test Sample.

ASTM D 5511 states that for the test to be considered valid, the Positive control (Reference material) must achieve 70 % within 30 days with deviation less than 20% of the mean between the replicates.

Positive control (Reference material) showed 70.90 % on 27<sup>th</sup> day with less than 20% of the mean difference between the replicates.

The gas displacement observed after 45 days is as shown in the table below.

**Table-2a: Biogas volume of the evolved gas during the biodegradation process at 45 days**

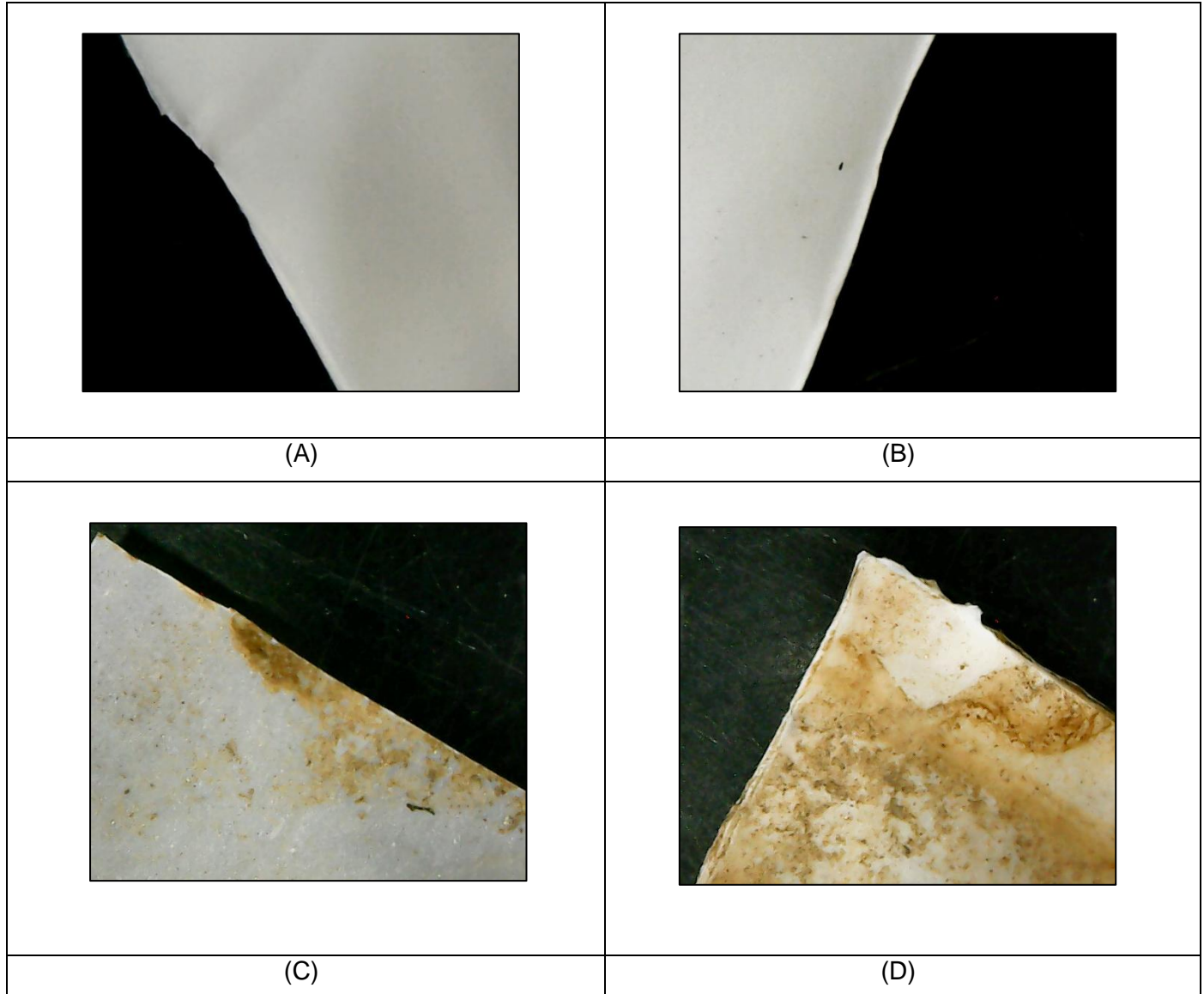
<b>Biodegradation Test</b>	<b>Total Volume 90 days (mL)</b>
<b>Inoculum</b>	2470
<b>Positive control</b> (Reference material)	9840
<b>Mineral Biodegradable Packaging</b>	5510

The percent biodegradation of Positive control (Reference material) and Test sample was calculated by the measured cumulative carbon dioxide and methane production from each flask after subtracting carbon dioxide evolution and methane evolution from the blank samples at the end of 45 days of testing. Calculations were based on Total Organic Carbon obtained of both Positive control (Reference material) and Test sample.

Note : The results reported relate to the sample tested only. Latest version of designated test methods has been used wherever it requires. The Test Certificate shall not be reproduced in full or part without the written permission of INTERTEK. The sample(s) has not been drawn/sampled by INTERTEK LAB. The reported result(s) provide no warranty or verification on the sample(s) representing any specific goods and / or shipment and only relate to the sample(s) as received and tested. This report was prepared solely for the use of the client named in this report. Intertek disclaims any and all liability for damage or injury which results in the use of the information contained herein and accepts no responsibility for any loss, damage or liability suffered by a third party as a result of any reliance upon or use of this report. All jobs are performed as per Intertek terms & Conditions available at <http://www.intertek.com/terms> or can be made available on request



<b>Report No.:</b> MUM/004812/2024	<b>Sample No:</b> 18683155	<b>Report Date:</b> 22/01/2025
------------------------------------	----------------------------	--------------------------------



**Figure 4: Microscopic image of Test samples Before and After 45 days Incubation Condition**

**A & B – Unexposed Test Mineral Biodegradable Packaging to anaerobic biodegradation process**  
**C & D – Exposed Test Mineral Biodegradable Packaging to anaerobic biodegradation process**

Note : The results reported relate to the sample tested only. Latest version of designated test methods has been used wherever it requires. The Test Certificate shall not be reproduced in full or part without the written permission of INTERTEK. The sample(s) has not been drawn/sampled by INTERTEK LAB. The reported result(s) provide no warranty or verification on the sample(s) representing any specific goods and / or shipment and only relate to the sample(s) as received and tested. This report was prepared solely for the use of the client named in this report. Intertek disclaims any and all liability for damage or injury which results in the use of the information contained herein and accepts no responsibility for any loss, damage or liability suffered by a third party as a result of any reliance upon or use of this report. All jobs are performed as per Intertek terms & Conditions available at <http://www.intertek.com/terms> or can be made available on request

<b>Report No.:</b> MUM/004812/2024	<b>Sample No:</b> 18683155	<b>Report Date:</b> 22/01/2025
------------------------------------	----------------------------	--------------------------------

The percent biodegradation of Positive control (Reference material) and Test sample was calculated by the measured cumulative carbon dioxide and methane production from each flask after subtracting carbon dioxide evolution and methane evolution from the blank samples at the end of 45 days of testing. Calculations were based on Total Organic Carbon obtained of both Positive control (Reference material) and Test sample.

**Table-3a: Percentage biodegradability of Positive control (Reference material) Cellulose.**

Group	Inoculum control	Positive control (Reference material)	Mineral Biodegradable Packaging Sample
Weight	1000 ml	10.4582 g	28.3435 g
Total volume (ml)	2470.00	9840.00	5510.00
% CH <sub>4</sub>	12.90	43.50	19.70
Volume of CH <sub>4</sub> (ml)	318.63	4280.40	1085.47
weight of CH <sub>4</sub> (g)	0.2090	2.8079	0.7121
% CO <sub>2</sub>	14.10	43.80	21.10
Volume of CO <sub>2</sub> (ml)	348.27	4309.92	1162.61
Weight of CO <sub>2</sub> (g)	0.6896	8.5336	2.3020
Total weight of carbon in grams	0.3430	4.4100	1.1556
Theoretical weight of carbon in grams (Ci)	-	4.3998	14.3866
Biodegradation	-	0.92439	0.05649
% Biodegradation	-	<b>92.44</b>	<b>5.65</b>

Note : The results reported relate to the sample tested only. Latest version of designated test methods has been used wherever it requires. The Test Certificate shall not be reproduced in full or part without the written permission of INTERTEK. The sample(s) has not been drawn/sampled by INTERTEK LAB. The reported result(s) provide no warranty or verification on the sample(s) representing any specific goods and / or shipment and only relate to the sample(s) as received and tested. This report was prepared solely for the use of the client named in this report. Intertek disclaims any and all liability for damage or injury which results in the use of the information contained herein and accepts no responsibility for any loss, damage or liability suffered by a third party as a result of any reliance upon or use of this report. All jobs are performed as per Intertek terms & Conditions available at <http://www.intertek.com/terms> or can be made available on request

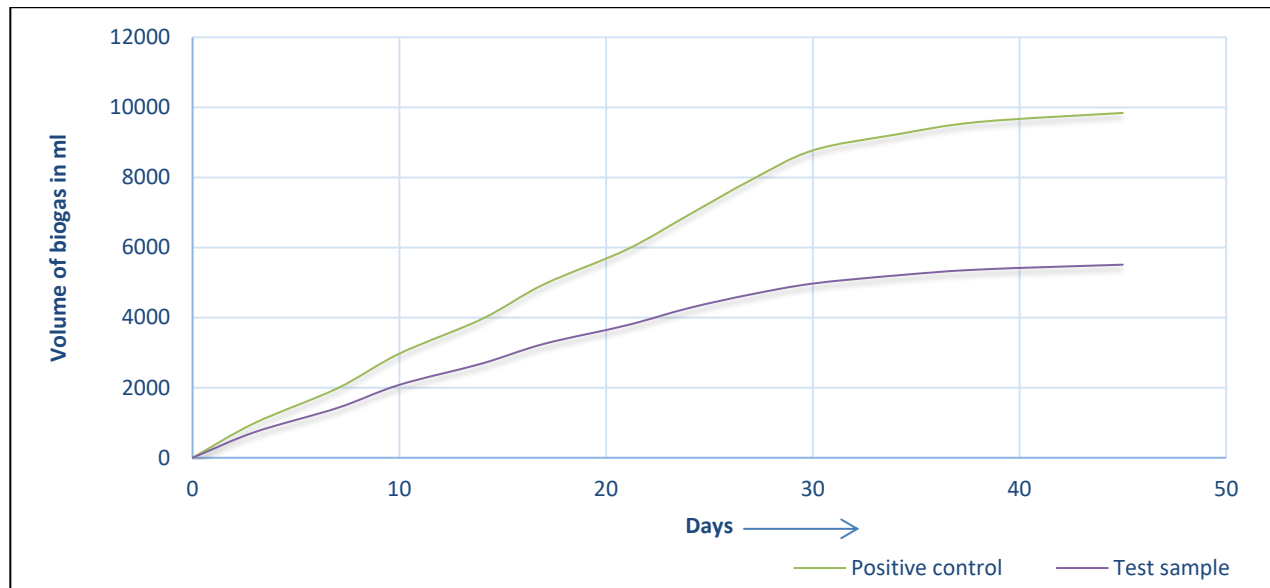
<b>Report No.:</b> MUM/004812/2024	<b>Sample No:</b> 18683155	<b>Report Date:</b> 22/01/2025
------------------------------------	----------------------------	--------------------------------

**Table 4: Percent weight loss of Mineral Biodegradable Packaging sample.**

Average Initial Weight (grams)	28.3435
Average Final Weight (grams)	28.2136
Percent Weight Loss (%)	0.46

The Percent weight loss was calculated based on the initial weight and final weight of the test sample after the 45 days study.

Biodegradation of the samples determined based on conversion of carbon from the test material to carbon in the gaseous phase (CH<sub>4</sub> and CO<sub>2</sub>) can be observed in graph 1 and graph 2a & 2b.

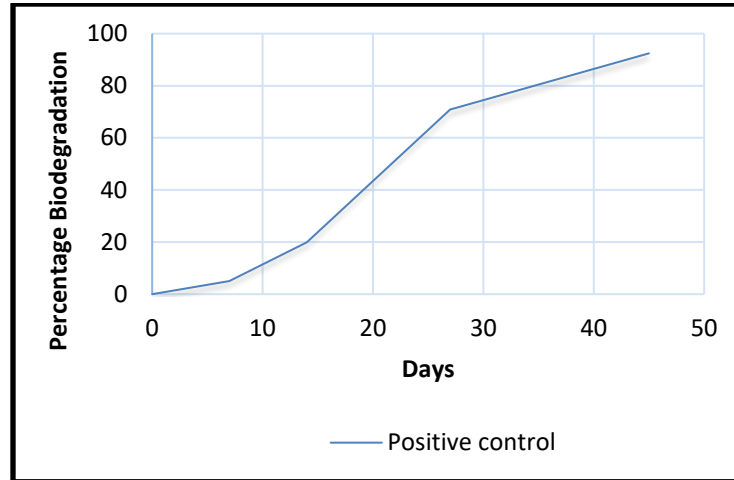


**Graph-1: Plot showing Net Biogas Production from Test sample (Mineral Biodegradable Packaging) and Positive control (Reference material- Cellulose)**

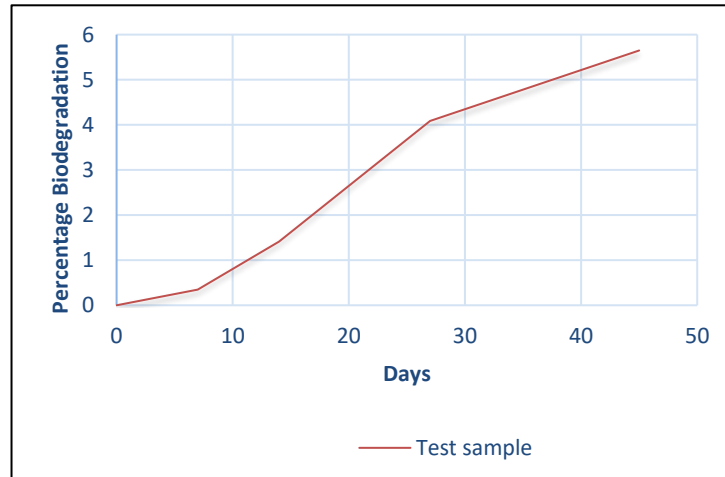
Note : The results reported relate to the sample tested only. Latest version of designated test methods has been used wherever it requires. The Test Certificate shall not be reproduced in full or part without the written permission of INTERTEK. The sample(s) has not been drawn/sampled by INTERTEK LAB. The reported result(s) provide no warranty or verification on the sample(s) representing any specific goods and / or shipment and only relate to the sample(s) as received and tested. This report was prepared solely for the use of the client named in this report. Intertek disclaims any and all liability for damage or injury which results in the use of the information contained herein and accepts no responsibility for any loss, damage or liability suffered by a third party as a result of any reliance upon or use of this report. All jobs are performed as per Intertek terms & Conditions available at <http://www.intertek.com/terms> or can be made available on request



<b>Report No.:</b> MUM/004812/2024	<b>Sample No.:</b> 18683155	<b>Report Date:</b> 22/01/2025
------------------------------------	-----------------------------	--------------------------------



**Graph-2a: The percent biodegradation of the Positive control (Reference material- Cellulose) determined based on conversion of carbon from cellulose to carbon in the gaseous phase ( $\text{CH}_4$  and  $\text{CO}_2$ )**



**Graph-2b: The percent biodegradation of the Test sample (Mineral Biodegradable Packaging Sample) determined based on conversion of carbon from the Test material to carbon in the gaseous phase ( $\text{CH}_4$  and  $\text{CO}_2$ )**

Note : The results reported relate to the sample tested only. Latest version of designated test methods has been used wherever it requires. The Test Certificate shall not be reproduced in full or part without the written permission of INTERTEK. The sample(s) has not been drawn/sampled by INTERTEK LAB. The reported result(s) provide no warranty or verification on the sample(s) representing any specific goods and / or shipment and only relate to the sample(s) as received and tested. This report was prepared solely for the use of the client named in this report. Intertek disclaims any and all liability for damage or injury which results in the use of the information contained herein and accepts no responsibility for any loss, damage or liability suffered by a third party as a result of any reliance upon or use of this report. All jobs are performed as per Intertek terms & Conditions available at <http://www.intertek.com/terms> or can be made available on request

<b>Report No.:</b> MUM/004812/2024	<b>Sample No:</b> 18683155	<b>Report Date:</b> 22/01/2025
------------------------------------	----------------------------	--------------------------------

**INTERPRETATION:**

Considering the cumulative gas production as observed in Table 2 & 3 and its analysis indicates that the process of biodegradation has occurred in **Mineral Biodegradable Packaging** Sample. After 45 days of incubation, the level of biodegradation for the Positive control (Reference material) was **92.44 %** while the **Mineral Biodegradable Packaging** sample submitted by Intertek Korea showed **5.65 %**.

**Reviewed By**

**Authorized Signatory**

**Alok Pandey**  
Assistant Manager – Biodegradability Services

**Ushadevi Yadav**  
Deputy Manager – Biodegradability Services

----- **End of Report** -----

Note : The results reported relate to the sample tested only. Latest version of designated test methods has been used wherever it requires. The Test Certificate shall not be reproduced in full or part without the written permission of INTERTEK. The sample(s) has not been drawn/sampled by INTERTEK LAB. The reported result(s) provide no warranty or verification on the sample(s) representing any specific goods and / or shipment and only relate to the sample(s) as received and tested. This report was prepared solely for the use of the client named in this report. Intertek disclaims any and all liability for damage or injury which results in the use of the information contained herein and accepts no responsibility for any loss, damage or liability suffered by a third party as a result of any reliance upon or use of this report. All jobs are performed as per Intertek terms & Conditions available at <http://www.intertek.com/terms> or can be made available on request